

Edition 04/2020 © 2020 JMG Cranes S.p.A. All rights reserved
Data subject to change without prior notice
Rev. 1 - 04/2020



JMG Cranes S.p.A.

Sales & Service Office

Via Bergamo, 142

26100 Cremona - Italy

t +39 0372 1786738

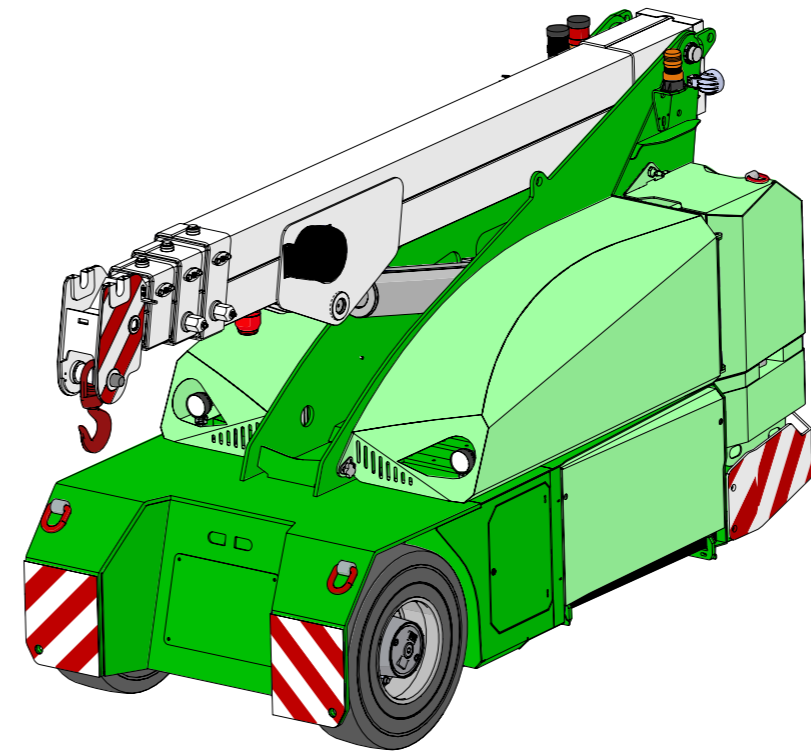
Production Plant

Via Sito Nuovo 14

29010 Sarmato (PC) - Italy

t +39 0523 8486

e info@jmgcranes.com



Electric
Pick & Carry
Cranes

MC 60S (metric)
Max Capacity 6,000 Kg

www.jmgcranes.com

JMG[®]
movetosolution

MC 60S

RADIO-REMOTE CONTROL ON DRIVING, STEERING, BOOM MOVEMENTS, WINCH AND OTHER ACCESSORIES

FRONT-WHEELS DRIVE WITH COUNTER ROTATION

REMOVABLE COUNTERWEIGHTS

HYDRAULICALLY TELESCOPING SEQUENTIAL TYPE BOOM

Options :

- HYDRAULIC WINCH
- HYDRAULIC FLY JIB
- BENDABLE MANUAL JIB WITH MANUAL EXTENSION
- NON-MARKING TIRES
- HYDRAULIC FORKS
- MAN BUCKET
- ATEX CONVERSIONS
- CUSTOMIZED PAINTING

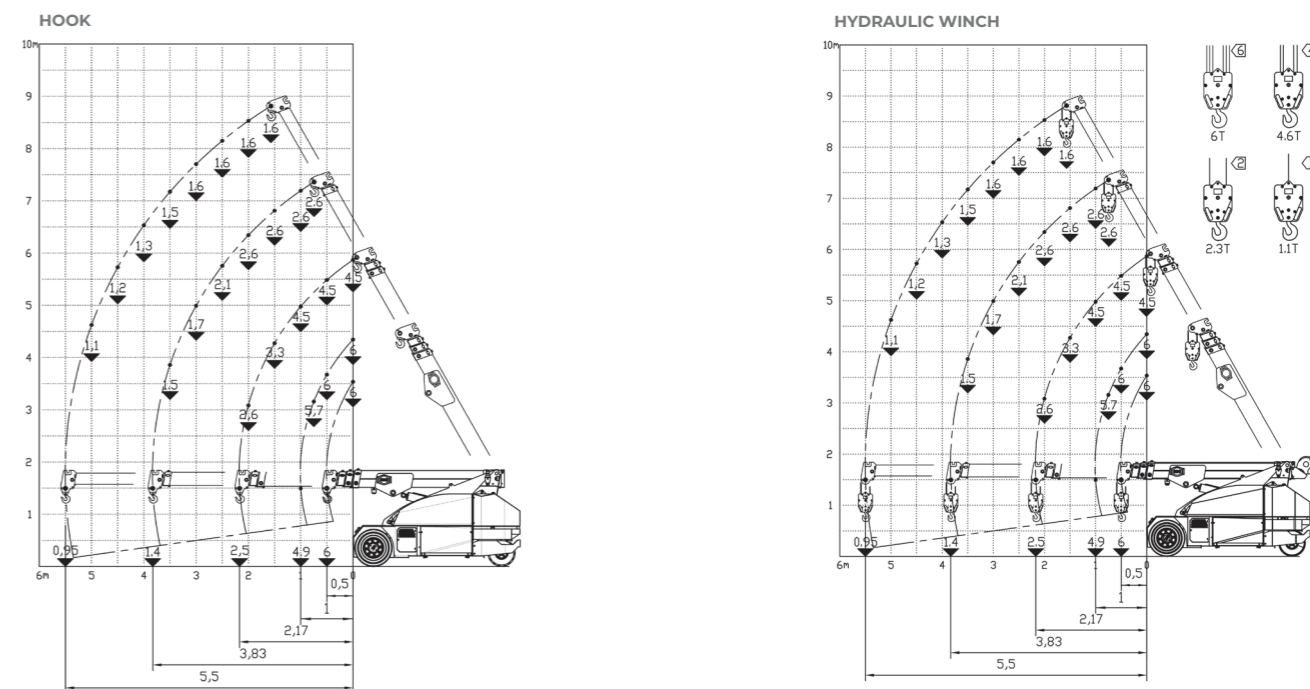


Technical features

Max Capacity kg	6,000	Front-wheels drive. 2 electric motors AC 3,5 kW 72V Insulation class H	LMI. Electronic safe load indicator and tilting moment limiter
	Dimensions mm	Total Kg. 6,900 Removable counterweights Kg.1,900	Automatic braking system on all wheels
Dimensions mm		72 V - 640 Ah 8 working hours	Fabricated from preformed and welded quality steel plate
	Dimensions mm	Front nr. 2 superelastic 250-15" Rear nr. 2 superelastic 21x8-9"	+60°/-15°
Dimensions mm		Rear Steering angle -90°/+90°	Motor driven pump 12 kW - 72 V AC, Insulation class H



Load charts



EU Standards CE

	UNI ISO 4301-2: A1
	2006/42 CE-2014/30 UE-2014/35 UE- 2000/14 and subsequent modifications
	EN 13000:2014 ANSI/ASME B30.5-2011 and subsequent modifications



Dimensions

